

ELECTRIC FRYER 1 BASIN 22 L

Project:
Rev:
Zone:
Location:



CODICE
CR0996779

MODELLO
D9222/10FREM

SERIE
DIAMANTE 90



GENERAL CHARACTERISTICS

In addition to offering the maximum choice of solutions and 2 mm thick and 90 cm deep tops, this series has all the power, robustness and functionality you need to work efficiently. External coatings and feet in stainless steel with Scotch Brite finish. Working table height adjustable from 840 to 900 mm. Range modularity: 200-400-600-800-1200. Wide range of accessories.

TECHNICAL SPECIFICATIONS

AISI 18/10 stainless steel tanks with cold zone and foam expansion zone.
Oil drain taps.
Oil drip pans on request.
Safety thermostat (230°C) against excessive oil temperatures.
IPX5 water jet protection

The large cold zone allows frying residues to settle, significantly extending the quality and life of the oil.

In the 22 litre electric version, the heating element can be rotated by more than 90°.

Equipment certified for low voltage directive 2014/35/EU according to the international CB scheme.

Thanks to the jet-proofing certification (IPX5) obtained through specific tests, knobs and under-knobs can be washed, without compromising functionality and safety.

ELECTRIC FRYER 1 BASIN 22 L

Project:
Rev:
Zone:
Location:



CODICE
CR0996779

MODELLO
D9222/10FREM

SERIE
DIAMANTE 90

Technical Information

SPECIFICATION	DATA
MATERIAL	CR0996779
DEFINITION	D9222/10 FREM FRIG.EL.1V 22LT MELTING
COMMERCIAL LINE	DIAMANTE
SUPPLY	ELECTRICS
DIM. WIDTH	460 mm
DIM. PRODUCTIVITY	900 mm
DIM. HEIGHT	870 mm
NET WEIGHT	59,400 Kg
VOLUME (net)	0.36
PACKAGE LENGTH	460 mm
PACKAGE WIDTH	1020,000 mm
PACKAGING HEIGHT	1150,000 mm
PACKAGE VOLUME	0,540 m3
GROSS PACKING WEIGHT	70,000 Kg
STANDARD POWER SUPPLY	380-415V 3N
FREQUENCY	50-60 Hz
ELECTRICAL POWER	18 kW
TENSION	400
IP GRADE	IPX5
CERTIFIED MODEL	D9222/10 FREM
Capacity	20 litri

ELECTRIC FRYER 1 BASIN 22 L

Project:
 Rev:
 Zone:
 Location:



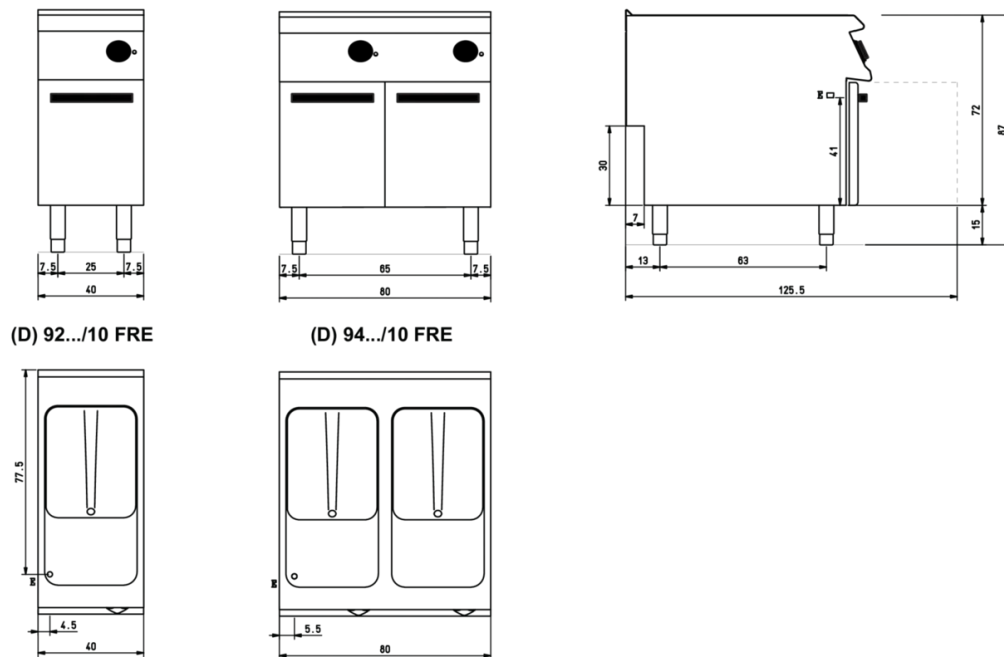
CODICE
CR0996779

MODELLO
D9222/10FREM

SERIE
DIAMANTE 90

SCHEMA DI INSTALLAZIONE - INSTALLATION DIAGRAM - INSTALLATIONSPLAN - SCHÉMA D'INSTALLATION - ESQUEMA DE INSTALACION - INSTALLATIESCHEMA - IINSTALLATIONSRIJNINGAR

MISURE IN cm - DIMENSIONS IN cm - ABMESSUNGEN IN cm
 MESURES EN cm - MEDIDAS EN cm - MATEN IN cm



Legenda - Legende - Key - Légende - Leyenda - Legenda

- E Pressacavo entrata linea elettrica - Stopfbuchse - Electric cable stress relief
 Presse étoupe de câble él. - Pisacable - Elektrische kabelwartel

ELECTRIC FRYER 1 BASIN 22 L

Project:
Rev:
Zone:
Location:



CODICE
CR0996779

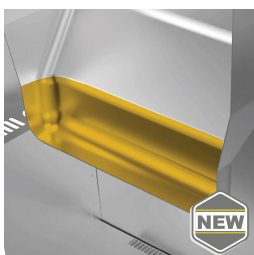
MODELLO
D9222/10FREM

SERIE
DIAMANTE 90

Product's PLUS



Thanks to the jet-proofing certification (IPX5) obtained through specific tests, knobs and under-knobs can be washed, without compromising functionality and safety.



The large cold zone allows frying residues to settle, significantly extending the quality and life of the oil.



Heating element completely removable from the tank for faster and more thorough cleaning.

Equipment certified for low voltage directive 2014/35/EU according to the international CB scheme.



ELECTRIC FRYER 1 BASIN 22 L

Project:
Rev:
Zone:
Location:



CODICE
CR0996779

MODELLO
D9222/10FREM

SERIE
DIAMANTE 90

ACCESSORIES

CODE	MODELLO	DESCRIZIONE
CR1353879	DCF15/17	Basket for tub 15 - 17 litres 1 pcs 24x33,7x12 cm capacity 15-17 litres
CR1353889	DCF15/17P	Small basket for tub 15-17 litres 1 pcs 12x33,7x12 cm capacity 15-17 litres
CR1353929	D9BRO	Oil pan 10-12 -15-17-22-23 litres
BN0221100047	CA40/10	Chimney extension for mod. 40 cm h=22 cm
BN0221100048	CA60/10	Chimney extension for mod. 60 cm h=22 cm
CR0592779	ZF4	Front plinth - FOR INSTALLING EQUIPMENT WITH FLOOR HEIGHT 90 CM L=40
CR0592830	ZG	SKIRTING JOINT
CR0592820	9ZL	Side plinth
MA97432000	R	WHEEL KIT (2 + 2) Ø 100
MA97433000	RI	WHEEL KIT (2 + 2) Ø 101 STAINLESS STEEL
CR0592869	PZM	NO. 4 STAINLESS STEEL FEET FOR INSTALLATION ON MASONRY PLINTH
CR0593580	9PT	No. 4 stainless steel feet for installation on tops
CR0592879	KPA	N.2 STAINLESS STEEL FEET WITH FLANGE
CR0592940	9CAT*	Water column for top equipment